

# DINOSAUR ANTS

Farmer Fergus lured thousands of dinosaur ants into his communication dish to make the reflective surface. Did you know that dinosaur ants or *Nothomyrmecia* Ants are in fact a real and extremely rare type of ants?

*Nothomyrmecia* Ants are native to Australia and are often referred to as "dinosaur ants" because they are believed to date back to the Cretaceous period, approximately 100 million years ago. They are considered one of the most primitive ant species in existence.

These ants have distinct physical characteristics as they are relatively large compared to many other ant species, with workers measuring around 10-15 millimeters in length. They have elongated mandibles and large eyes, which are adaptations for their specialized hunting behaviour.

Use the instructions below to draw your own dinosaur ant.

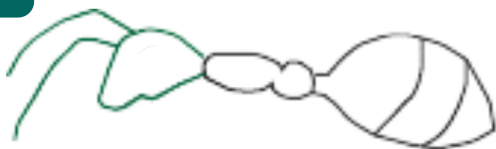
1



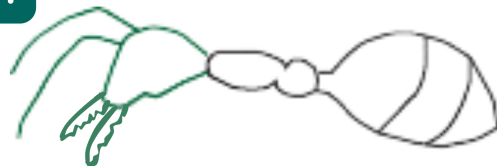
2



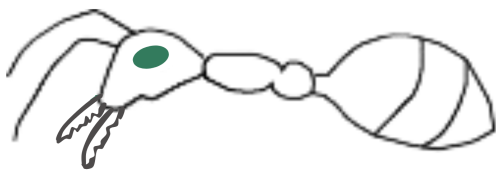
3



4



5



6



7



Follows a sequence of steps to create an artwork.

