

CICADA ACTIVITIES

1

2

3

4

LIFE CYCLE OF A CICADA

9

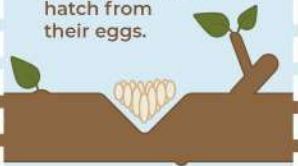
8

7

6

5

After several months, in a V-cut into the tree, the nymphs hatch from their eggs.



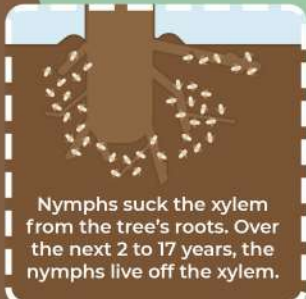
They use their front claws to attach to the tree and the adult cicada climbs out of its exoskeleton through the back.



After at least 2 years and up to 17 years, the nymphs dig out of the ground.



Nymphs suck the xylem from the tree's roots. Over the next 2 to 17 years, the nymphs live off the xylem.



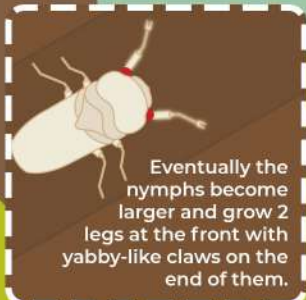
Nymphs drop from the tree and burrow into the ground.



The males sing their song to find a female and they mate.



Eventually the nymphs become larger and grow 2 legs at the front with yabby-like claws on the end of them.



The males cut V's into the branch of a tree and the female lays up to 20 of her 300 eggs in each V. The adults die within a few weeks.



The nymphs climb up the tree.

