

UMBRELLAS

There is a beautiful picture of 2 umbrellas in a watery painted snow picture. Follow the steps below to make a similar picture.

YOU WILL NEED:

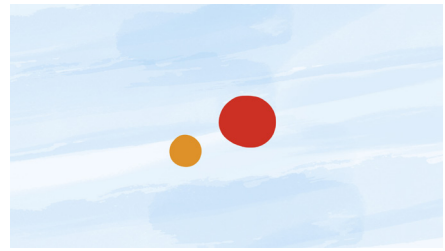
Yellow, White, Red and Blue paint - Paint brush - Paper (any size)

1



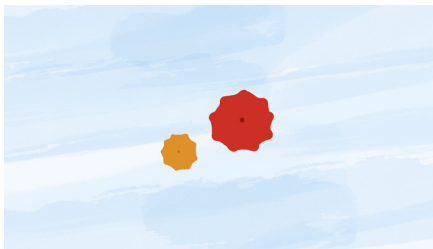
Use a blue watered down paint and brush uneven diagonal lines.

2



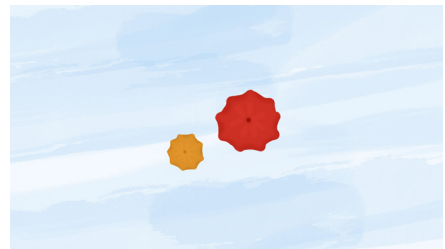
With the yellow and red paint, make a big red circle and small yellow circle.

3



Add sun-like rays on each circle and a tiny dot in the middle.

4



Mix a darker colour of the yellow and red paint to add in between the deep sections of the umbrella to add depth.

5



Now add white specs of uneven sizes for falling snow.

Visual Arts: ACAVAM106 - Explore ideas and imagination to create visual artworks and design.



© LearnFromPlay | LearnFromPlay.com

